

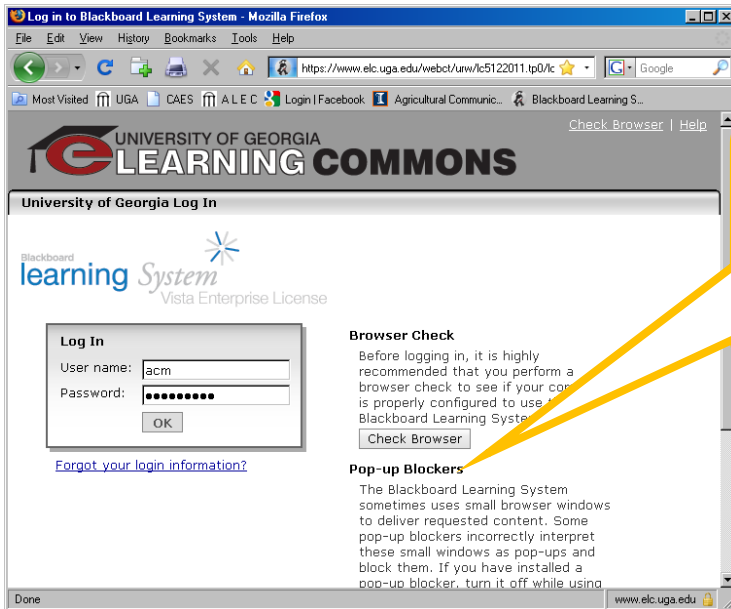
e Learning Commons Instructions

Login for e Learning Commons

Following this link:

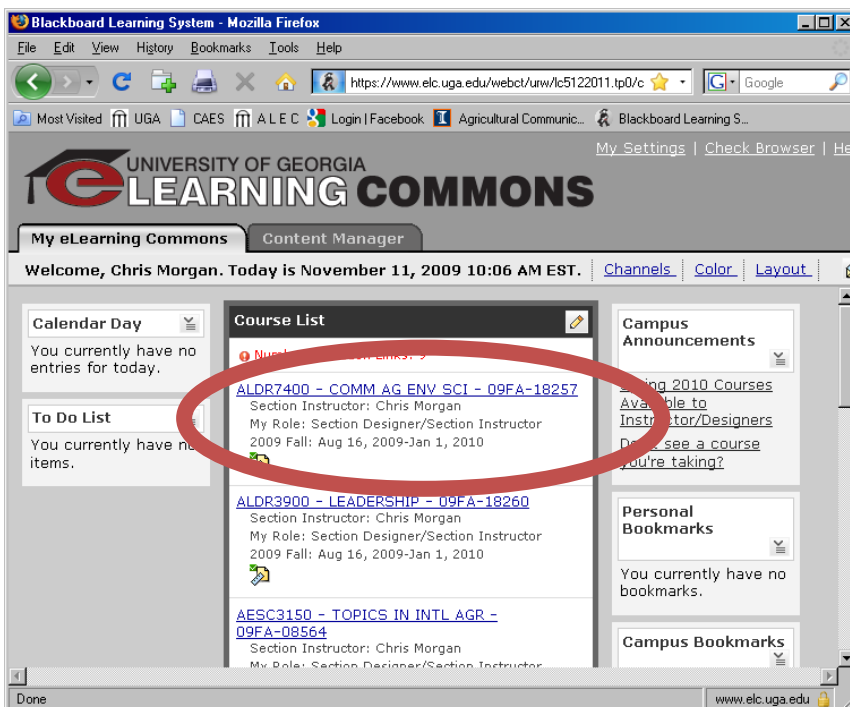
<https://www.elc.uga.edu/>

When prompted, provide your user name (UGA MyID) and Password. Click **OK**.



Your browser will need to accept pop-up windows from this site. You may need to change the settings on your browser for this to occur

From the **Course List** choose your course number (such as ALDR 7400)

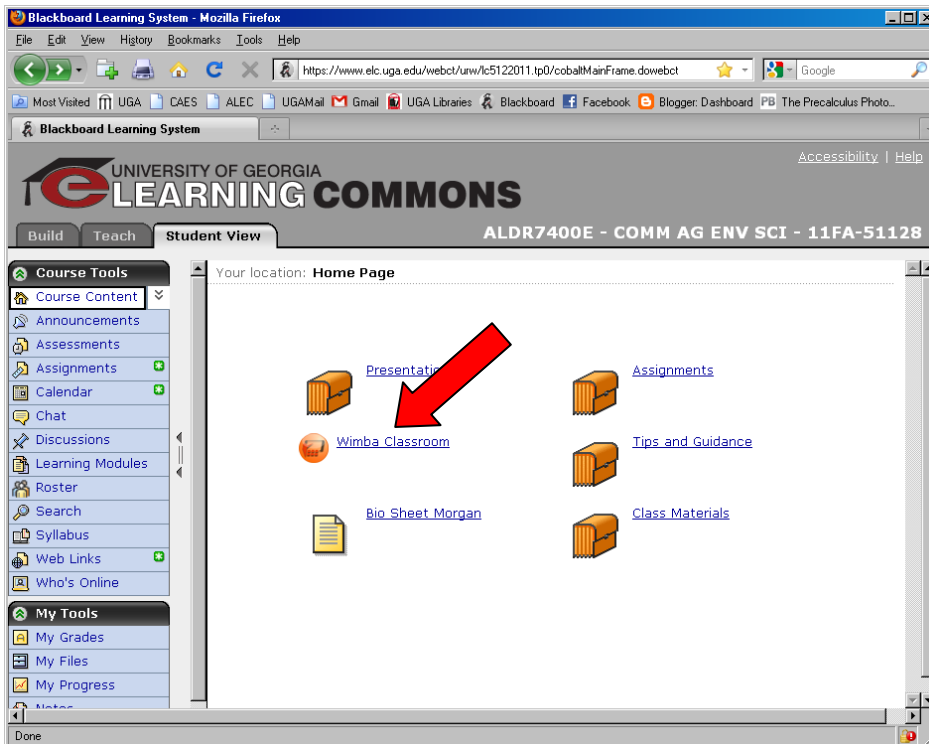


Enter the **Wimba Classroom** by clicking on the link (one of two icons will probably be used, see red arrows below)

Either this icon, or...



...this icon...



Click **Enter this Room** (red arrow)

If this is your first time to use Wimba with your computer, look to the right and click **Setup Wizard**. This will lead you through a set up process and check your microphone, etc.

The screenshot shows the Blackboard Learning System interface for the University of Georgia Learning Commons. The page title is "ALDR7400E - COMM A". The main content area displays "Wimba Classroom" for "ALDR 7400 Wimba Classroom". There are three buttons: "Enter this Room", "Setup wizard", and "Wimba Classroom Help". A red arrow points to "Enter this Room", and a yellow callout box with the text "First time users need to use Setup Wizard" points to "Setup wizard". Below the buttons, there is a section for "ALDR 7400 Wimba Classroom (Open)" with "Communication in Agricultural and Environmental Sciences". It lists "Phone Access" with "Dial-in numbers" (Phone: (201) 549-7592) and "Pin codes" (Student: 51357031). At the bottom, there is a table for recorded archives, which is currently empty.

A second window will open. If you have already run **Setup Wizard**, click through this screen using the **click here** link (red arrow).

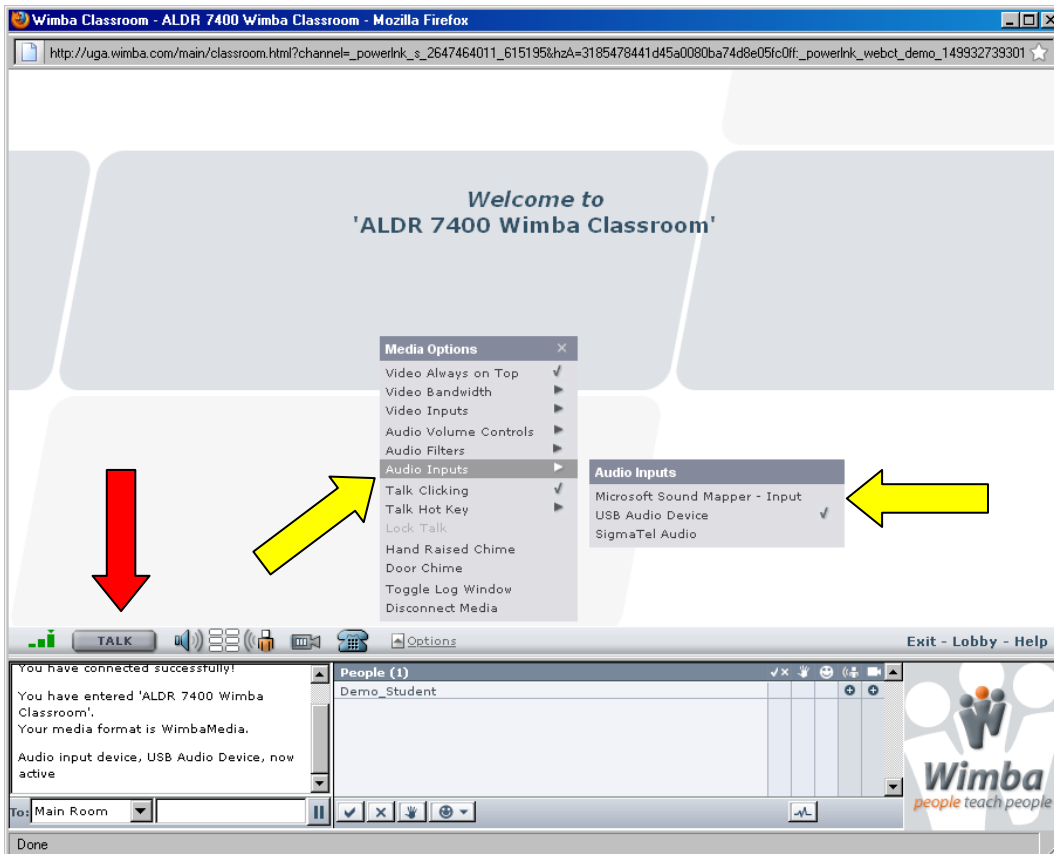
The screenshot shows the "Wimba Classroom Wizard Check" screen. The title is "Wimba Classroom Wizard Check - Mozilla Firefox". The URL is "http://uga.wimba.com/check_wizard.pl?channel=_powerlnk_s_2647464011_615195&X=Wimba-ContextType=SECTION&X=Wimba-InstitutionLCID=5122011&X". The page features the Wimba Classroom logo and the text "Is Your Computer Ready?". Below this, it says "All users should run the Setup Wizard before entering for the first time. This will ensure that you have a successful Wimba Classroom experience." There is a "Run Wizard" button. At the bottom, it says "If you have completed the wizard previously, [click here](#) to enter Wimba Classroom". A red arrow points to the "click here" link.

Be certain your **microphone** is connected to your computer (on some laptops a microphone is built in).

Once you enter the classroom click on **Talk** to see if your microphone is working (red arrow). If not, you may need to choose the microphone source from the menu (yellow arrows):

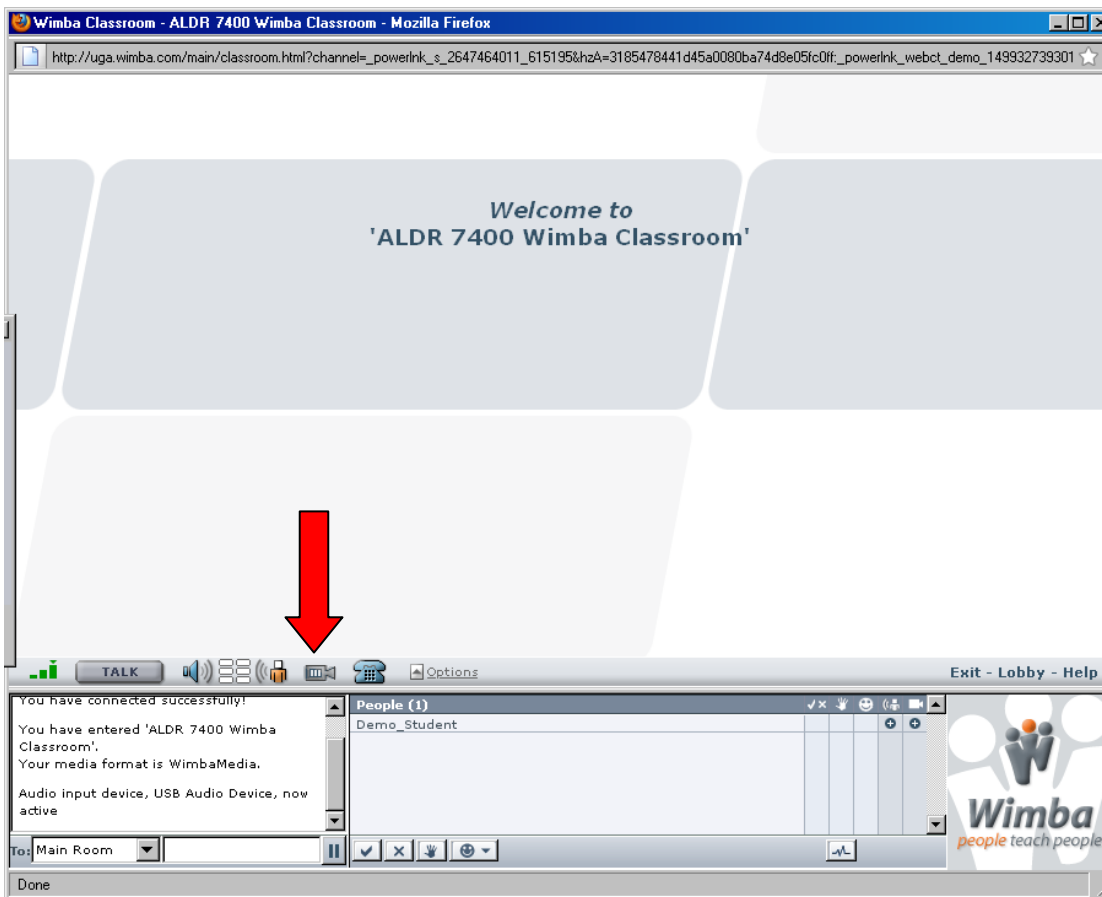
Options > Audio Inputs > [choose audio source used for microphone]

The **Control button (Ctrl)** also activates the talk function.



Getting your **webcam** set up is similar. Connect your webcam to your computer (built-in on some laptops, otherwise they are usually connected via a USB port).

Click the camera icon (red arrow)



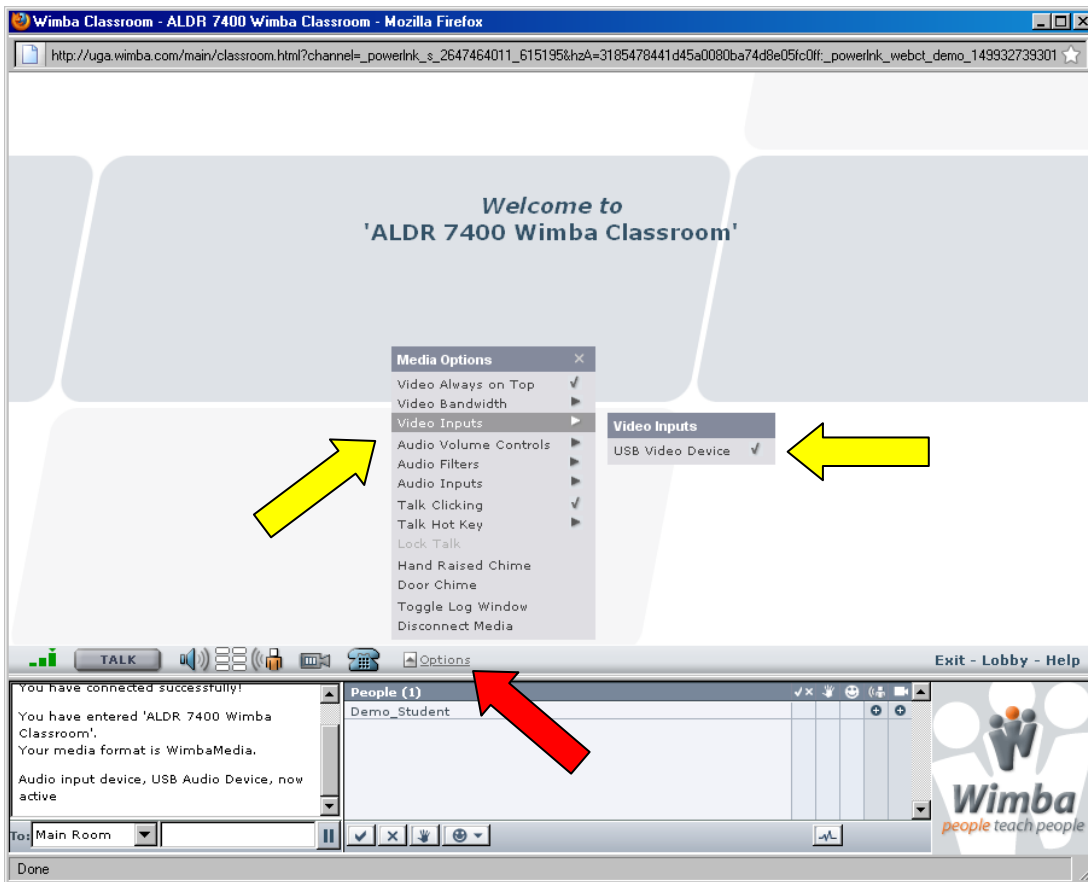
This should open a third window. Click the closed eyelid to reveal your camera (red arrow).



The eyelid will then open (red arrow) and your camera feed will be revealed (yellow arrow).



If your camera doesn't seem to respond, look at the **Options** menu (red arrow), using the **Video Inputs** choices (yellow arrows).



If Wimba is still proving difficult contact the help desk at help@uga.edu or 706-542-3106 or <http://elc.uga.edu/contact.html>.

Other eLC/Wimba links that may be helpful:

<http://www.dixie.edu/helpdesk/wimba.php>

<https://elearn.usu.edu/support/wimba-quickstart3.html>

http://blackboard.sru.edu/helpdocs/wimba_instructor.htm